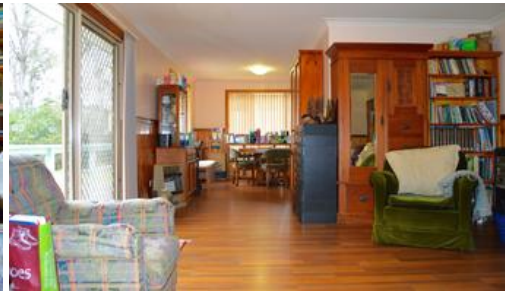




117 Bodalla Park Drive, Bodalla



Modern Family Home @ Bodalla Park Estate

"Rose-Marie" @ Bodalla Park Estate is a modern family home set on a 1.09 hectare fenced block of land. From the time you enter the circular driveway, you will feel at home.

Features include: Three good sized bedrooms, three way bathroom, open plan living/dining area. There is a single garage with internal access as well as a double lock up garage at the rear of the home. The garden lovers are well catered for with the five greenhouses and a vast orchid collection with a sprinkler system. The large rear verandah is ideal for alfresco entertaining when friends and family drop in.

Bodalla Park is a sought after area due to its larger blocks, modern homes and yet close to Bodalla, Potato Point with its pristine beaches, Moruya and Narooma.

The above information provided has been furnished to us by the vendor/s. We have not verified whether or not that information is accurate and do not have any belief in one way or the other in its accuracy. We do not accept any responsibility to any person for its accuracy and do no more than pass it on. All interested parties should make and rely upon their own inquiries in order to determine whether or not this information is in fact accurate.

🛏 3 🚿 1 🚗 3

Price SOLD for \$405,000
Property Type residential
Property ID 27
Land Area 1.09 ha

Agent Details

Sam Sheather - 0478 004 088
 Gary Cotterill - 0434 108 888

Office Details

Clearwater Real Estate - Narooma
 1/114 Wagonga Street Narooma NSW
 2546 Australia
 02 4476 4449

